

On Air Scheduler User's Manual

Supplement B

Exporting Music Data from On Air Scheduler

On Air Scheduler is a tool for people who need basic music scheduling. When you need a music scheduler with bells and whistles, OAS makes it easy to extract your music data to a comma-delimited text file. This file can then be used to build your new music database.

1. From the main menu of On Air Scheduler, press **M** to select Music Database Management Menu.

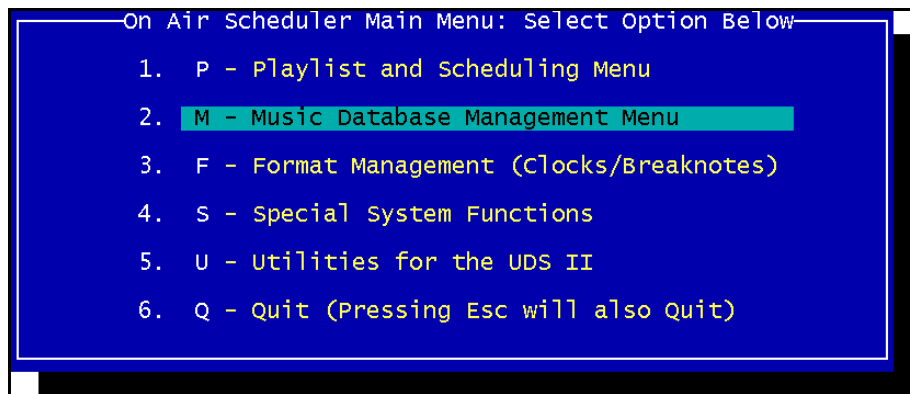


Figure 1—Main Menu

2. From the Music Database Management Menu, press **I** to select Inventory: Print Music Library.



Figure 2—Music Database Management Menu

Exporting Music Data, continued

3. From the Music Inventory Menu, press **A** to select Artist Name Sort.

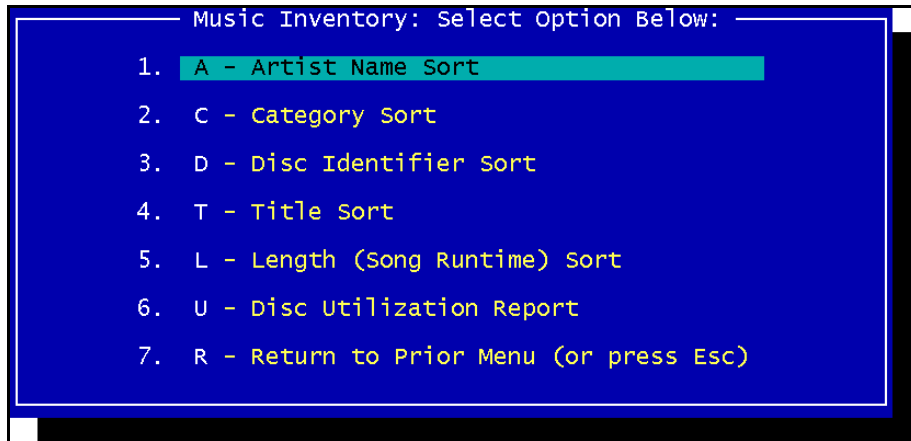


Figure 3—Music Inventory Menu

4. From the Report Style Menu, press **A** to select ASCII Comma Delimited Report.

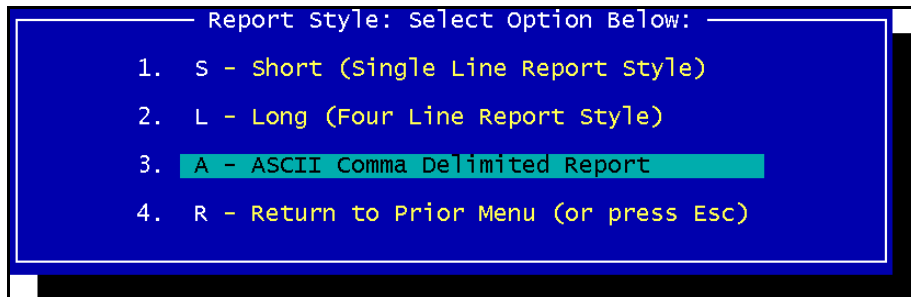


Figure 4—Report Style Menu

5. From the Category Mode Menu, press **A** to select All Categories in Report.

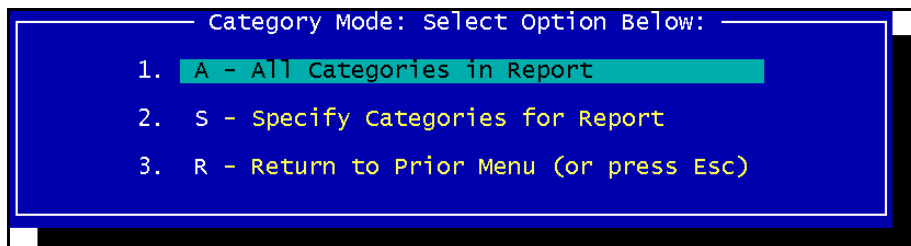


Figure 5—Category Mode Menu

Exporting Music Data, continued

6. From the Music Inventory View/Copy Menu, press \vee to select View and/or Print the Report.

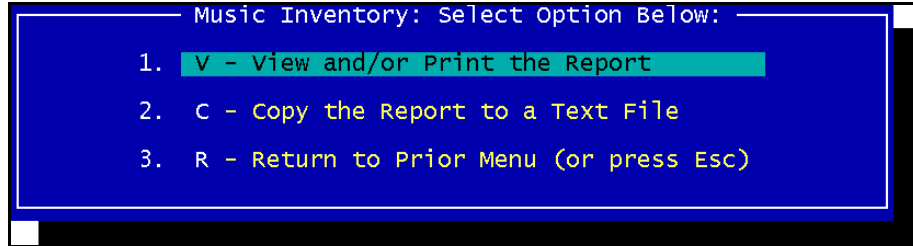


Figure 6—Music Inventory View/Copy Menu, View

7. Observe the header for this text file. It contains a detailed description of each field in this comma-delimited text file. This information will aid your music scheduling software provider in creating your new music database.

```

On Air Scheduler
# If you're planning to import this ASCII comma delimited report to another
# program, please strip out all of this informational text (all lines begin
# with a hash mark if informational).
# All fields are treated as strings with the content shown in order:
# 1). CD and track number
# 2). Category number
# 3). Category name
# 4). Title
# 5). Artist
# 6). On Air USA UDS index - T if indexed, F if not indexed
# 7). Runtime (MM:SS)
# 8). Intro (:SS)
# 9). Ending type (usually F for fade and C for cold)
# 10). Last playdate (YYYY) and time
# 11). Gender code (space character if none)
# 12). Intensity code (space character if none)
# 13). Artist group code 1 (space character if none)
# 14). Artist group code 2 (space character if none)
# 15). Year of song (YYYY)
# 16). Cue In (SS.T)
# 17). Machine
# 18). Slot
# 19). Magazine
For complete information on special key functions, press F1

```

Figure 7—Comma-delimited Text File, Header

Exporting Music Data, continued

8. Press } to see the songs in your music library. You may keep pressing } to page through the library or use the W and Y arrow keys to move one line at a time.

```

On Air Scheduler
" BE10-00", "16", "Beatles", "SunKing/Mustard/Pam/Thru Window/Slumber", "Beatles",
" BE16-00", "16", "Beatles", "The End", "Beatles", "T", " 2:02", ":00", "F", "03/12/200
" BE33-00", "16", "Beatles", "Ticket To Ride", "Beatles", "T", " 3:01", ":00", "F", "03
" BE35-00", "16", "Beatles", "wait", "Beatles", "T", " 2:10", ":00", "C", "03/12/2001 @
" BE31-00", "16", "Beatles", "When I'm Sixty Four", "Beatles", "T", " 2:37", ":00", "C
" 8552-00", "15", "BPI-EZ", "Yesterday", "Beatles", "T", " 2:03", ":00", "F", "03/12/20
" BE09-00", "16", "Beatles", "You Never Give Me Your Money", "Beatles", "T", " 3:49"
" 8276-00", "15", "BPI-EZ", "Key Largo", "Bertie Higgins", "T", " 3:07", ":00", "F", "0
" T176-00", "13", "Classic Rock2", "Baby Grand", "Billy Joel & Ray Charles", "T", "
" T184-00", "13", "Classic Rock2", "Honesty", "Billy Joel", "T", " 3:42", ":00", "C", "
" T053-00", "12", "Classic Rock1", "Modern woman", "Billy Joel", "T", " 3:38", ":00"
" T099-00", "12", "Classic Rock1", "My Life", "Billy Joel", "T", " 3:41", ":00", "F", "
" T045-00", "12", "Classic Rock1", "Only The Good Die Young", "Billy Joel", "T", " 3
" T030-00", "12", "Classic Rock1", "Piano Man", "Billy Joel", "T", " 5:21", ":00", "F"
" 8279-00", "15", "BPI-EZ", "She's Always A woman", "Billy Joel", "T", " 3:14", ":00"
" 8168-00", "15", "BPI-EZ", "She's Got A way", "Billy Joel", "T", " 2:54", ":00", "F",
" T182-00", "13", "Classic Rock2", "Tell Her About It", "Billy Joel", "T", " 3:22", "
" T010-00", "12", "Classic Rock1", "Uptown Girl", "Billy Joel", "T", " 3:02", ":00", "
" T076-00", "12", "Classic Rock1", "More Than A Feeling", "Boston", "T", " 3:26", ":0
" T151-00", "13", "Classic Rock2", "End of the Road", "Boyz II Men", "T", " 4:06", "
" 8173-00", "15", "BPI-EZ", "Look what You've Done To Me", "Boz Scaggs", "T", " 3:41
" 8474-00", "12", "Classic Rock1", "Aubrey", "Bread", "T", " 3:34", ":00", "C", "03/12/
" 8515-00", "13", "Classic Rock2", "Baby, I'm A Want You", "Bread", "T", " 2:19", ":0
For complete information on special key functions, press F1

```

Figure 8—Comma-delimited Text File, Body

9. When you are satisfied that this is a true and accurate copy of your music database, press ^ to return to the Music Inventory View/Copy Menu.
10. From the Music Inventory View/Copy Menu, press C to select Copy the Report to a Text File.

```

Music Inventory: Select Option Below:
1. V - View and/or Print the Report
2. C - Copy the Report to a Text File
3. R - Return to Prior Menu (or press Esc)

```

Figure 9—Music Inventory Menu, Copy

11. Place a blank diskette into the A: diskette drive. This diskette will store the text file you are about to create from your On Air Scheduler music library data.

Exporting Music Data, continued

12. Type **A**: \ then the name by which you wish to save this file.

Your music scheduling software provider may request a specific name for the text file. In the example below, the name of the file needs to be MYMUSIC.TXT so you would type **A**: \MYMUSIC.TXT.

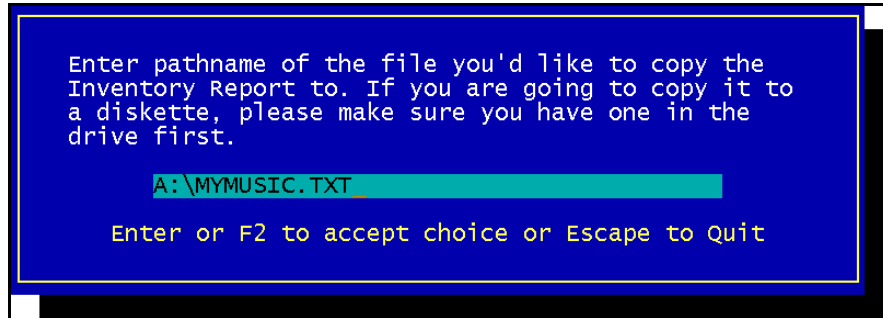


Figure 10—File Name Entry

13. Press **M** to save the file to the name you have entered.

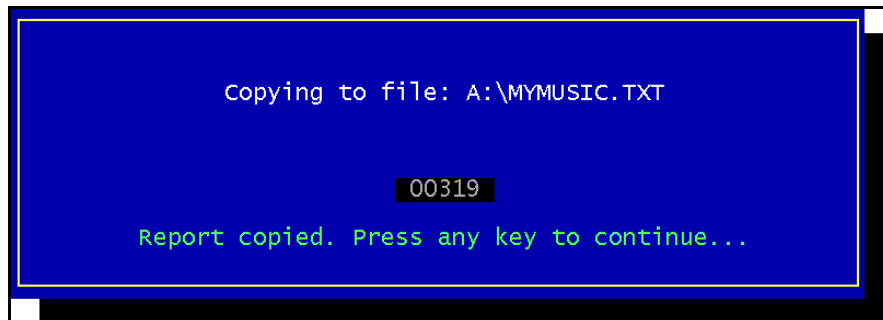


Figure 11—Report Copied Successfully

14. Press **K** to acknowledge this message and return to the Music Inventory View/Copy menu. Then press **^** three times to return to the Main Menu.

The music library text file creation is now complete. You may now send this text file on this diskette or via e-mail to your new music scheduling software provider.

If you have any questions, comments, or suggestions about On Air Scheduler software or documentation, please contact us right away. You can reach On Air Digital USA by fax at 972-481-9499, by email at support@onairusa.com, and by telephone at 972-481-8700.

This page left intentionally blank.